

Role of Electrical Department in Bangladesh Railway

Md. Habibur Rahman

Addl. Chief Electrical Engineer (West) (CC)

Bangladesh Railway, Rajshahi

Bsc in EEE, MPSM

Basic function:

➤ **Train Lighting**

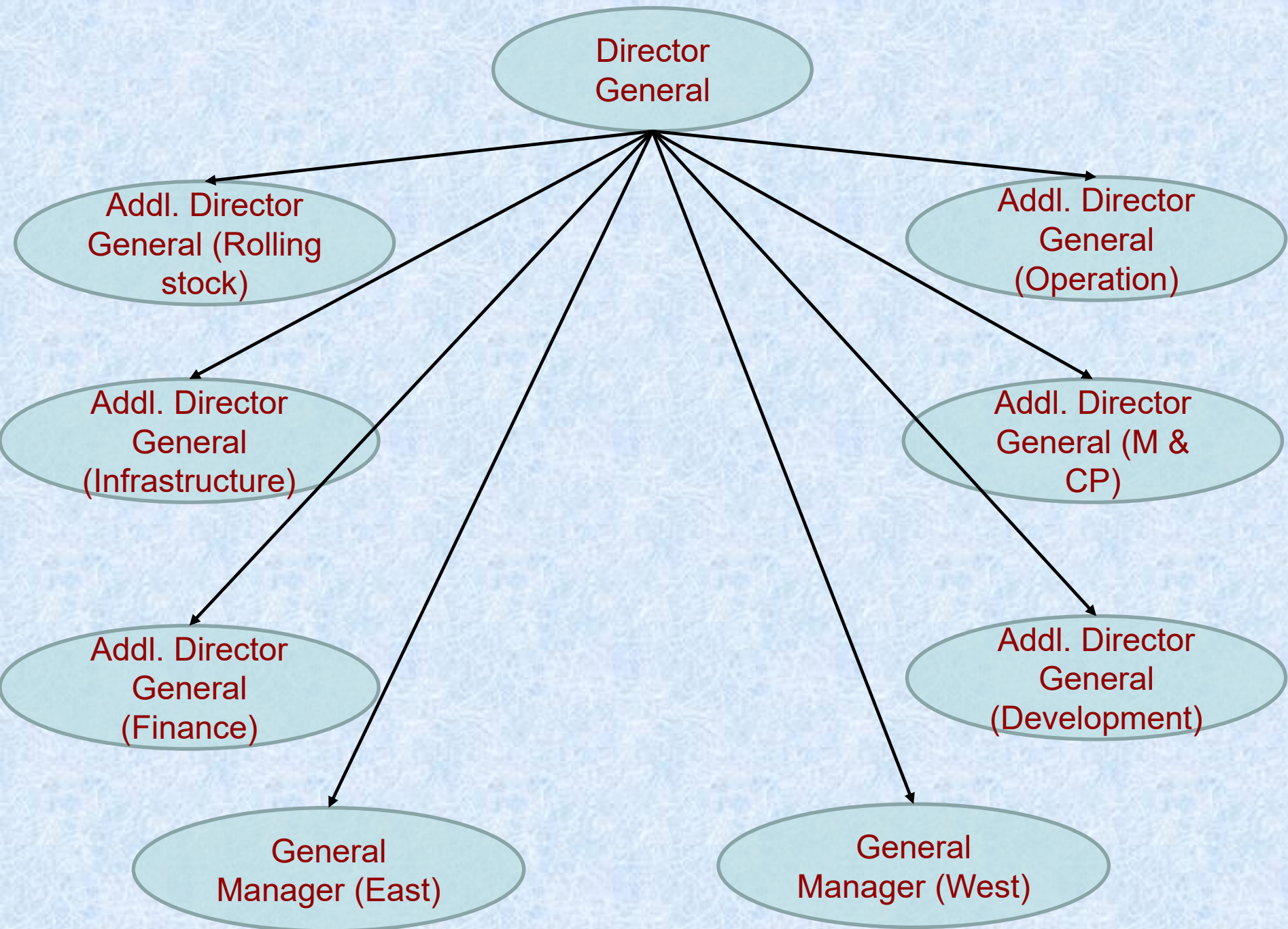
➤ **Power**

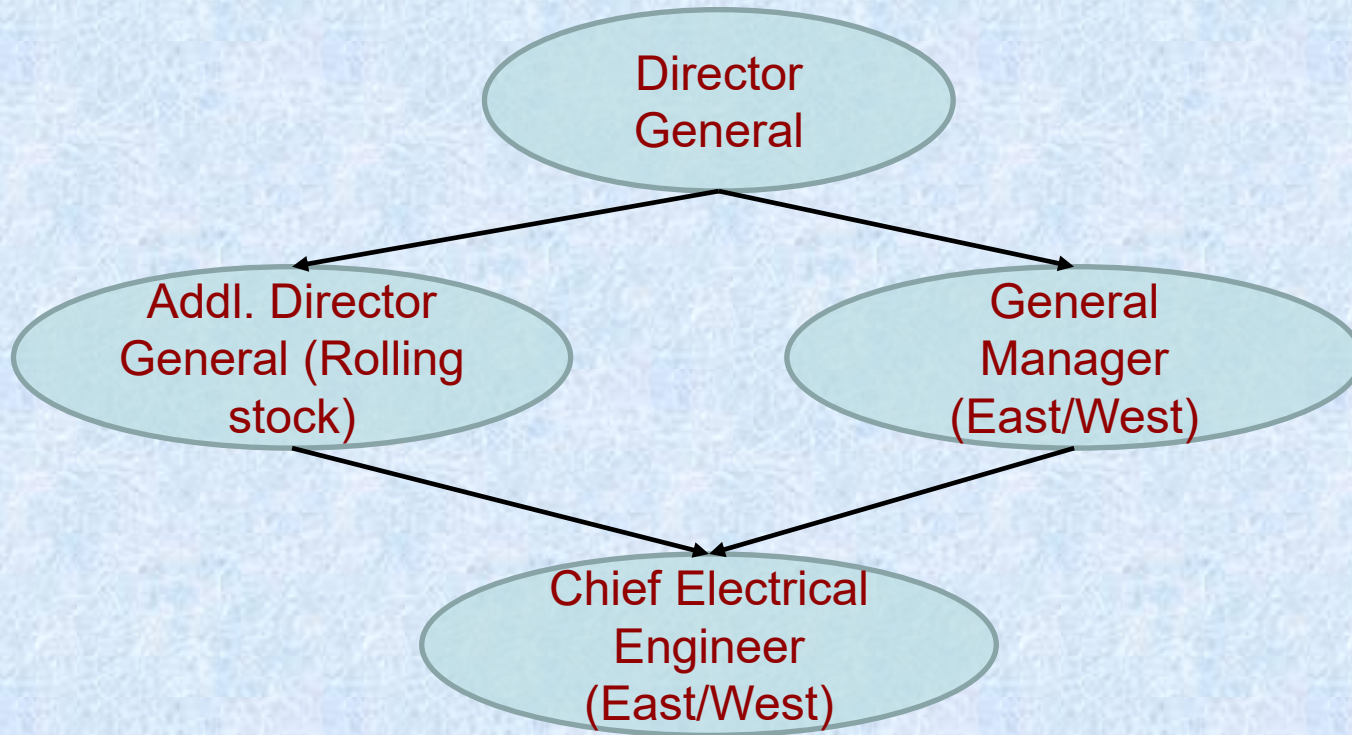
Train Lighting:

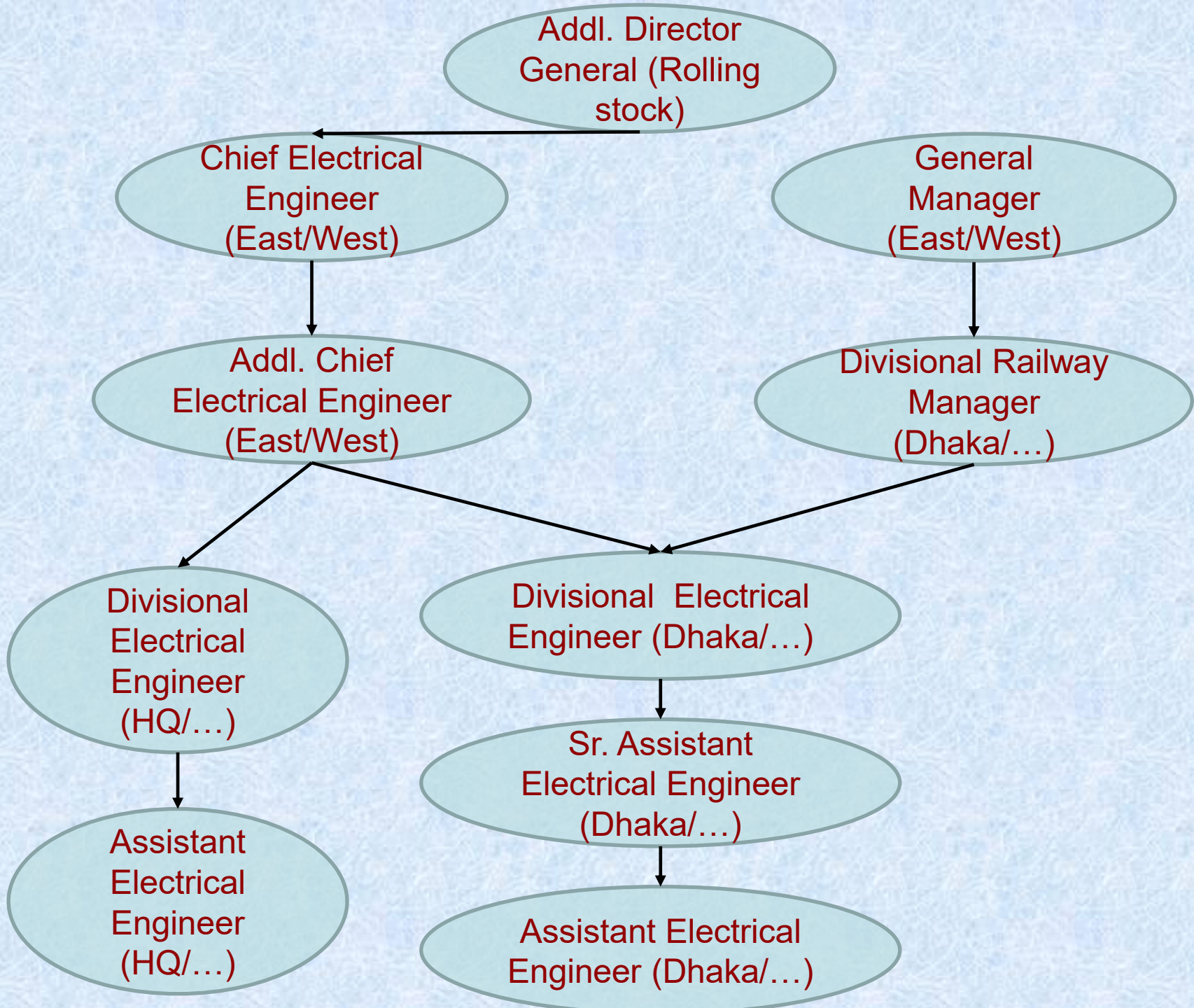
- **Power generation and supply to Passenger coaches.**
- **Maintenance of Electrical appliances in Passenger coaches.**
- **Operation & Maintenance of Air conditioning system in Passenger coaches.**

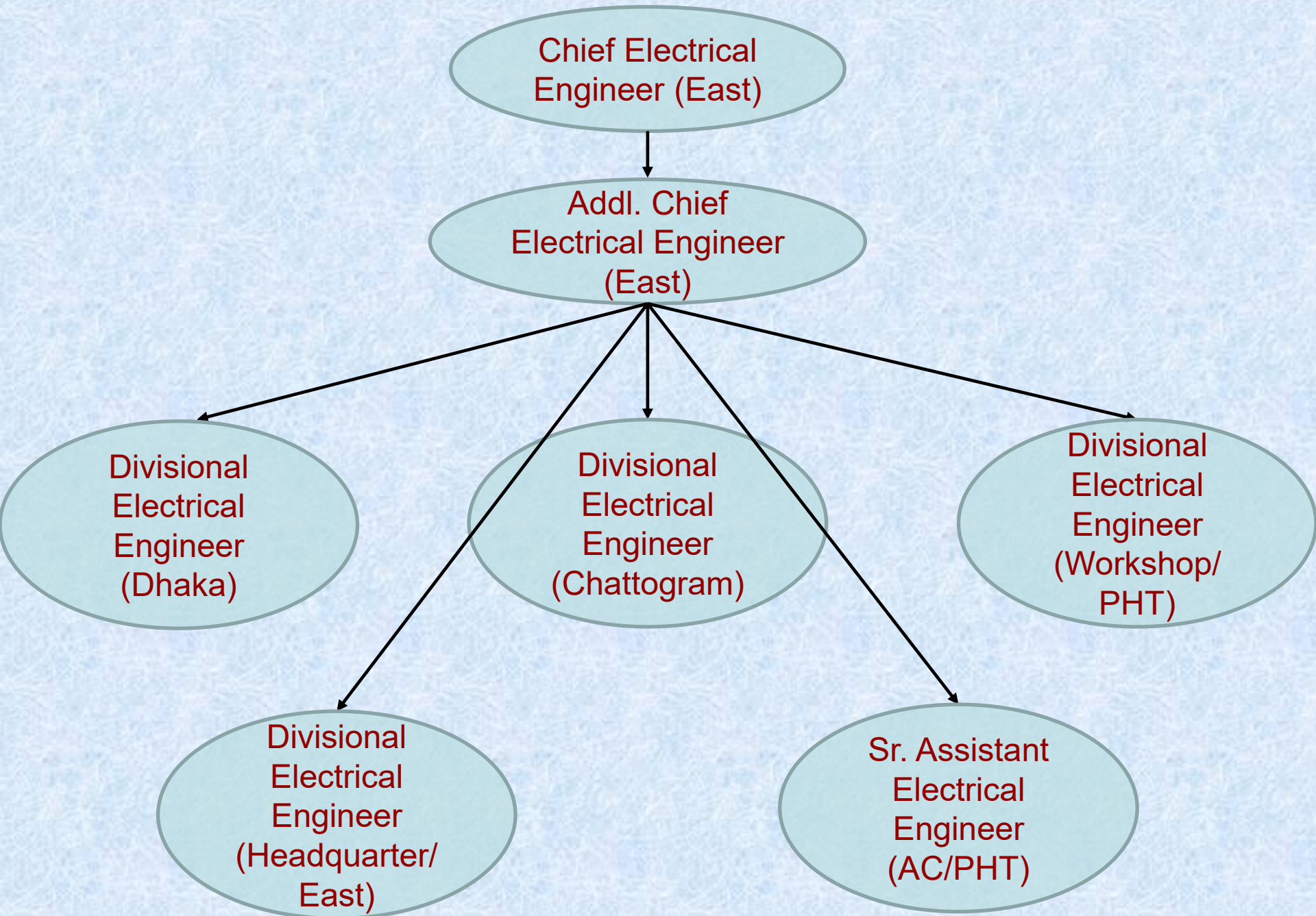
Power:

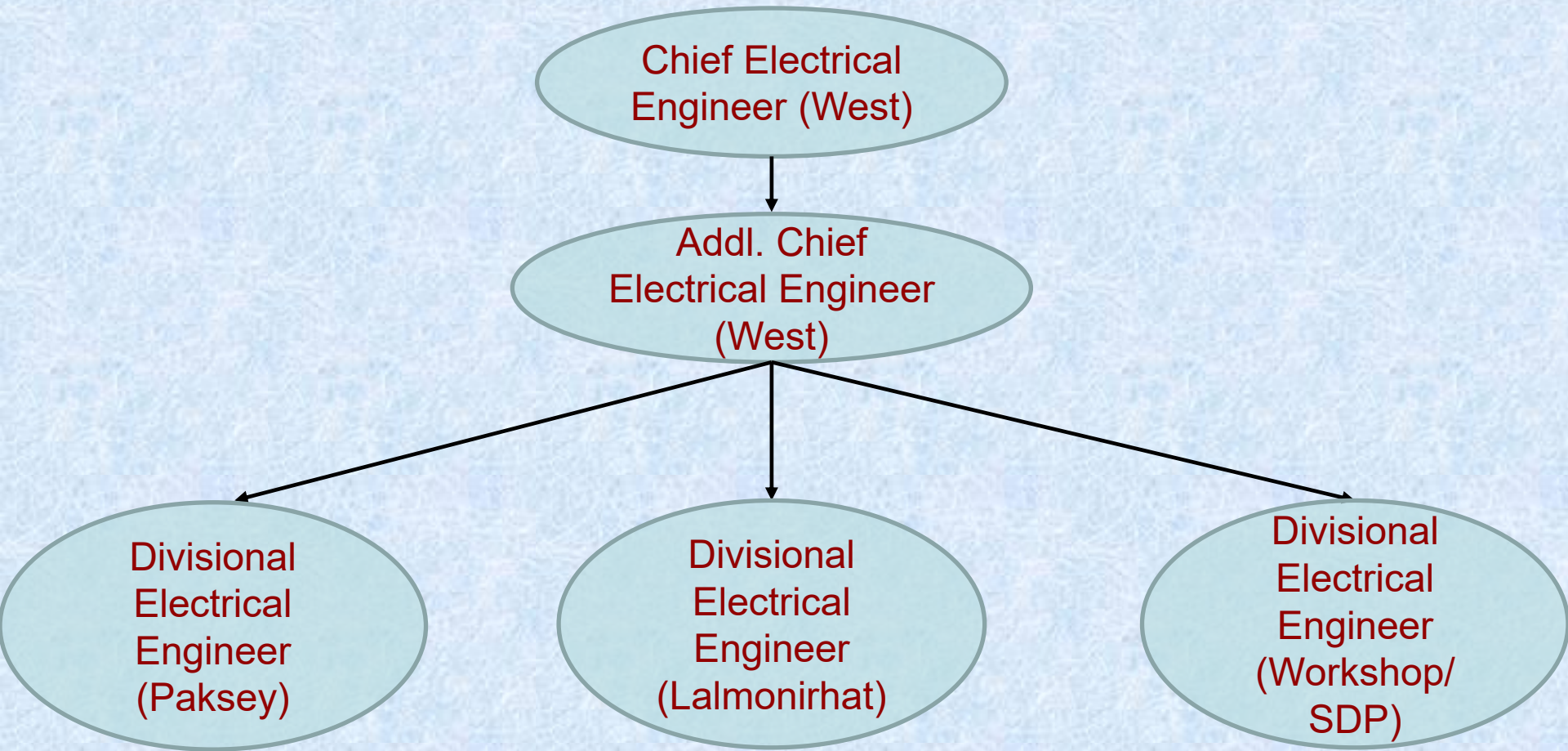
- **Power distribution and supply to Bangladesh Railway installations.**
- **Maintenance of Electrical appliances in Bangladesh Railway installations.**
- **Operation & Maintenance of Water pumps.**
- **Billing of Electricity consumption.**

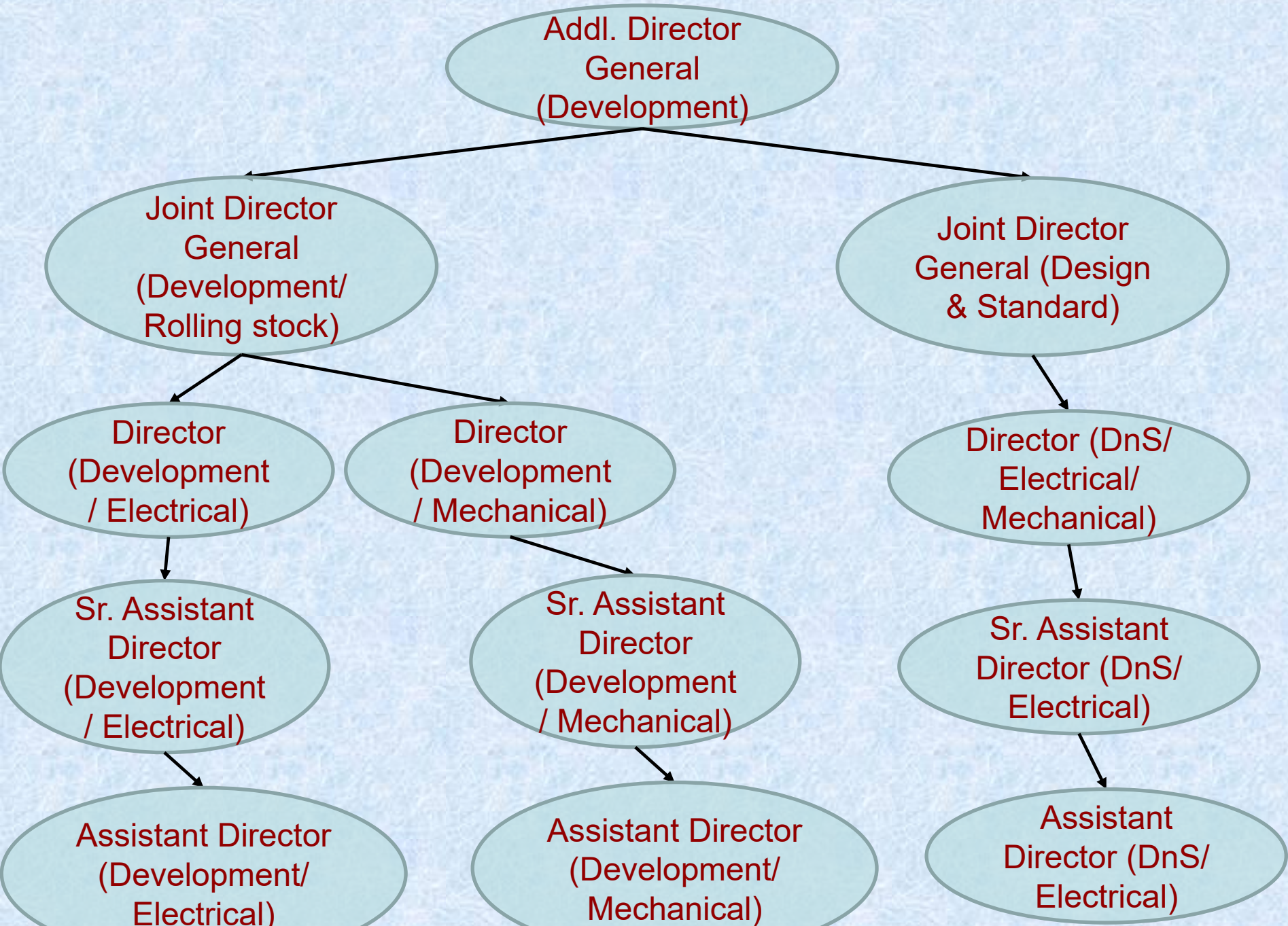


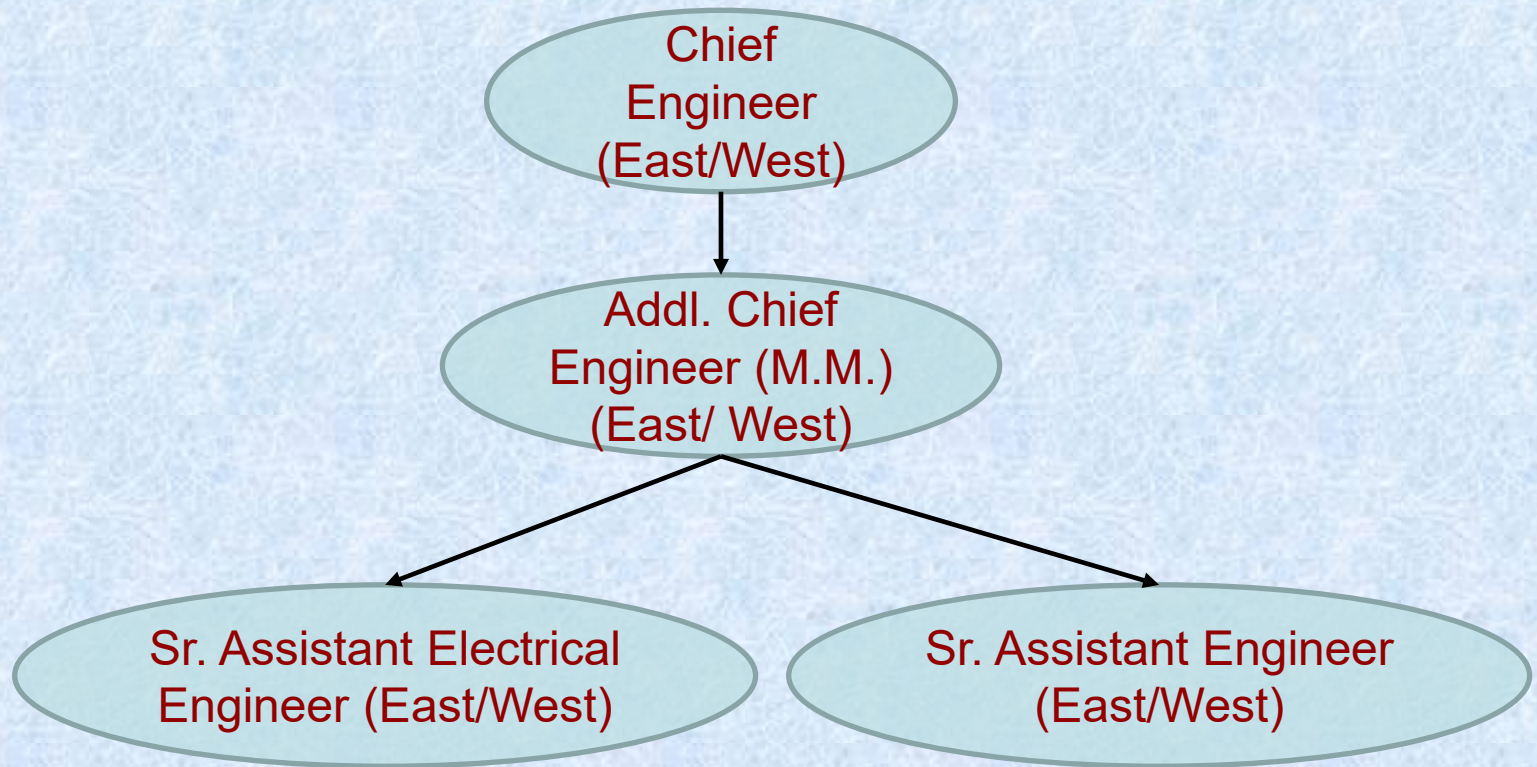












Thank you